

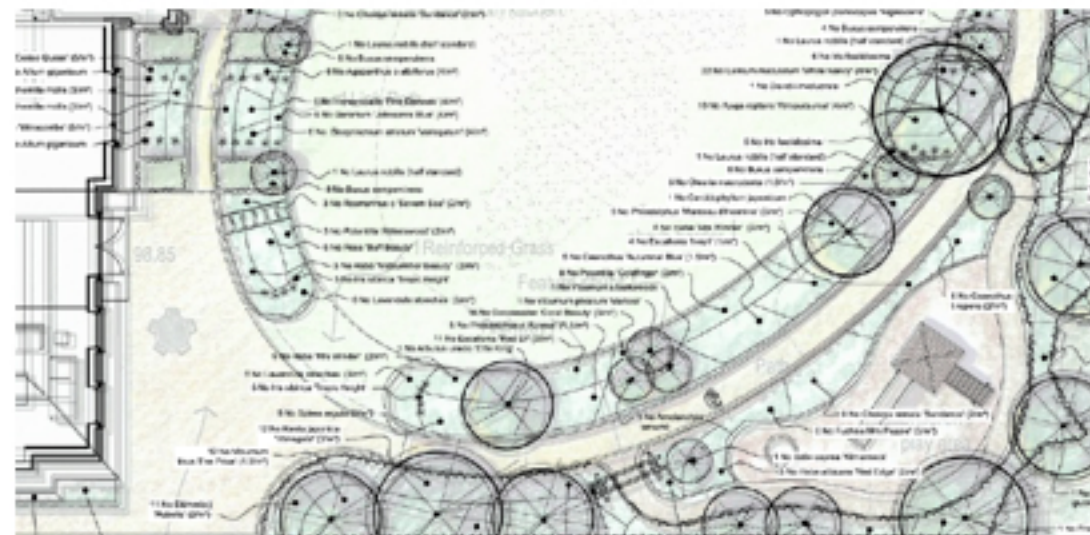
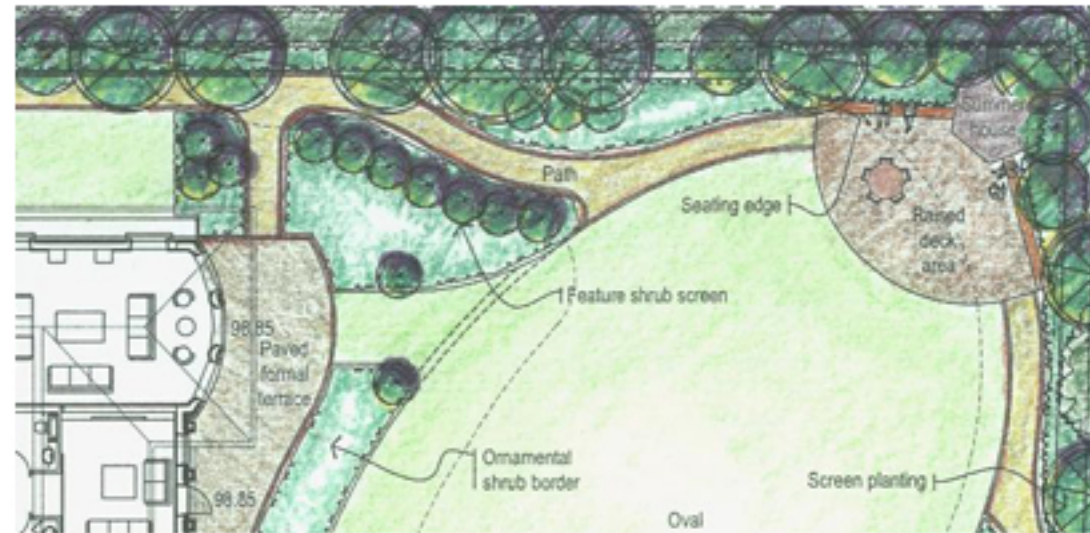
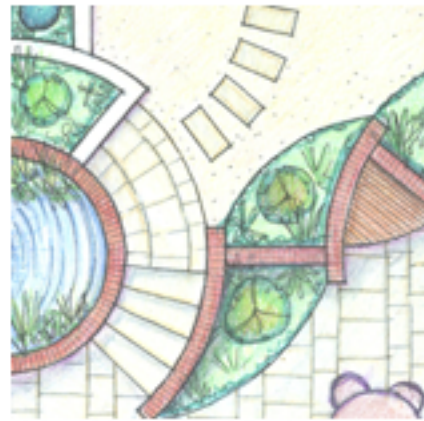
PARKS AND GARDENS

Good quality public parks and green spaces benefit people's wellbeing.

At Weston-super-Mare Healthy Living Centre, we designed and supervised the construction of a community park and a series of open spaces to facilitate improvements in a deprived area of the city. Community engagement was crucial in making the project a success. The park is a very valued community space: local residents have access to quality outdoor open spaces, they reconnect with nature, it provides opportunities for social interaction within the housing estate and dedicated play spaces for the local children.

The landscape contributes to the healing process at the Great Western Hospital Mental Health Units in Swindon and The Elm Nursery Azsheilmer in Nealsea where we created secured sensory gardens and courtyards. The emphasis is on designing uplifting and calming outdoor spaces for patients.

We have also been commissioned to design private gardens in the South West, Oxfordshire and Ireland.



Services

- Weston-super-Mare Healthy Living Centre: Community Park
- Millennium Green, W-s-M: Community Park
- Coniston Green, W-s-M: Community Park

Health Sector

- The Elms Nurseries Home (Nailsea): Grounds and Secured Sensory Garden for Alzheimer Patients
- Great Western Hospital (Swindon) Older Peoples Mental Health Unit: Courtyards and Grounds
- Keynsham and Yate Health Parks: external works and soft landscape

